

POTATO TECHNOLOGY
BEET TECHNOLOGY
VEGETABLE TECHNOLOGY

GRIMME

EVO 290 AirSep

2-row, off-set pulled potato harvester with 9 t bunker



EVO 290 AirSep

Special features
at a glance:

Ergonomic picking platform

Provides a comfortable workplace for up to six people

Operator terminal GBT 817 at picking table

Allows changing of important functions directly at the picking platform

9-ton bunker (standard)

The largest bunker on a trailed potato harvester

Bunker head lowering (option)

Ensures gentle crop transfer into the transport trailer

5.5-ton NonstopBunker (option)

Allows nonstop digging and highest gentle crop handling during overloading by using the whole bunker volume. An increase of up to 30 % is possible compared to standard bunker.

Operating interface GDI (standard)

New intuitive, clearly structured user interface with easy-to-use symbols on the operators terminal CCI 50 (standard) or on CCI 1200 (option). Multi-functional lever available on request

Visual Protect (option)

Facilitates an all-round function monitoring of your harvester

MemoryControl (standard)

For an easy saving and "re-use" of specific harvest parameters

Speedtronic (option)

Load dependant and fully automatic speed control system for the separators and picking table

Connection to myGRIMME (standard)

Machinery data and location parameters can be transferred to the web-based customer portal myGRIMME on request

Automatic self-centre steering (standard)

Supports the operator with an accurate row guidance of the machine on the ridge

Hydraulic ridge relief (standard)

Avoids ridge compacting by reducing the pressure on the ridge

TerraControl (option)

Avoids compacting of the ridges and keeps the digging depth on a constant level

TerraDisc (option)

Disc coulter intake for heavy soils, without diablo rollers

AirSep separator

The patented AirSep removes moist clods and stones from the harvested crop by means of a gentle air stream.

First separator with scraper rollers

For an efficient separation of haulm residues and small clods

2nd separator

ClodSep-separator for best separation on cloddy soils

TriSys 3 wheel chassis (standard)

Up to 65 % increased contact area compared to conventional harvesters with constant manoeuvrability. Radial tyres up to 1000/50 R25 are available as an option.

Automatic levelling (standard)

For optimum use of the sieving areas also on slopes

VarioDrive (option)

The stepless, power split transmission for the main webs

2nd main web with deviner web

For efficient separation of potatoes and haulm

Intake

Potatoes and vegetables

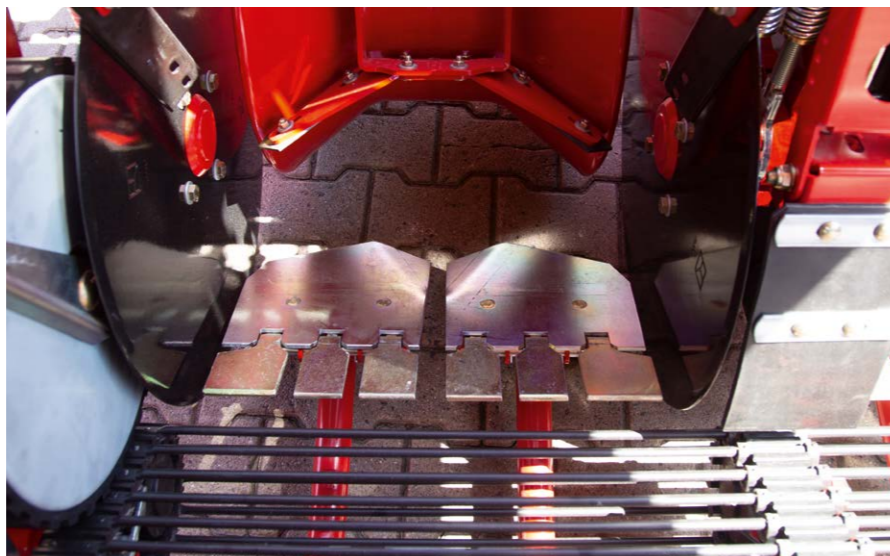
In addition to the standard diablo roller intake, a windrow intake with quick-change frame is available as an option. A through typed share for vegetables is also available.



Share blades

For all conditions

There are 2- and 3-blade versions as "normal" or long blade available. A mechanical stone protection for share blade is available (option).



Centre share

Harvesting across the entire width

A centre share can be used for operation of the harvester in beds or in enhanced harvesting process. Machines which are used for the windrowing method (2 + 2) can be converted to "half" diablo rollers.



Exact guidance

Diablo roller intake unit

The intake unit that has been tried and trusted many times, consists of large-dimensioned spring mounted disc coulters and haulm feed-in rollers. As an option up to 4 disc coulters can be hydraulically driven.



Ridge pressure and constant digging depth

TerraControl

TerraControl avoids compacting of the ridges with a constant ridge pressure and keeps the digging depth on a constant level under all digging conditions.



Digging without blockage

TerraDisc

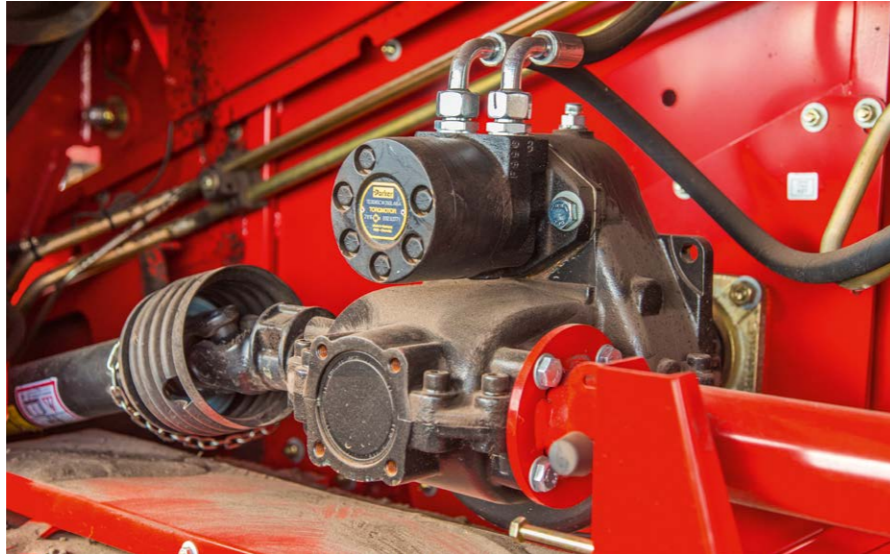
TerraDisc is the name for the disc coulters intake unit without diablo rollers, with depth control via skids. TerraDisc is especially suitable for heavy soils, as it does not compact the ridges.

Optimum speed

Main web drive

In addition to the standard direct drive, a 3-step gearbox or a continuously variable drive, called VarioDrive, is available on request.

VARIO
Drive



Highest sieving performance

Main webs

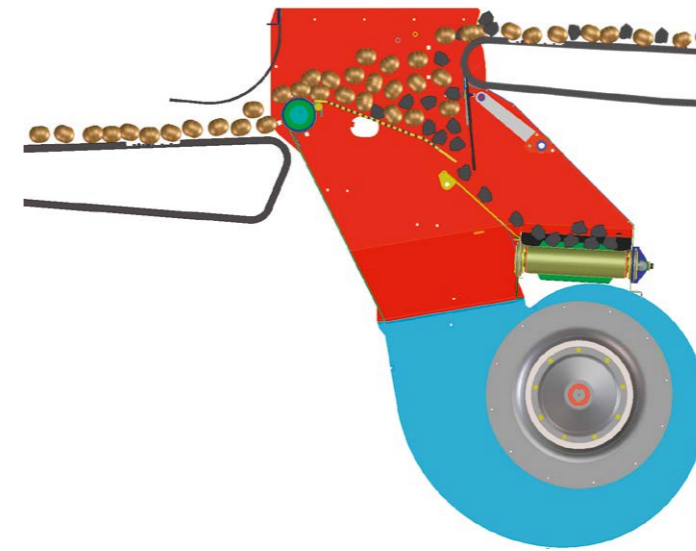
The first and second main web ensure maximum sieving performance. For less soil sticking and therefore an improved crop handling, stainless steel panels are integrated in the main web channel (standard).



Haulm separation

Deviner web

Sieving, separating, conveying: three functions in one work procedure. A minimum drop height ensures a gentle crop flow from the 1st to the 2nd main web. Following the crop is transported in portions upwards in pockets.

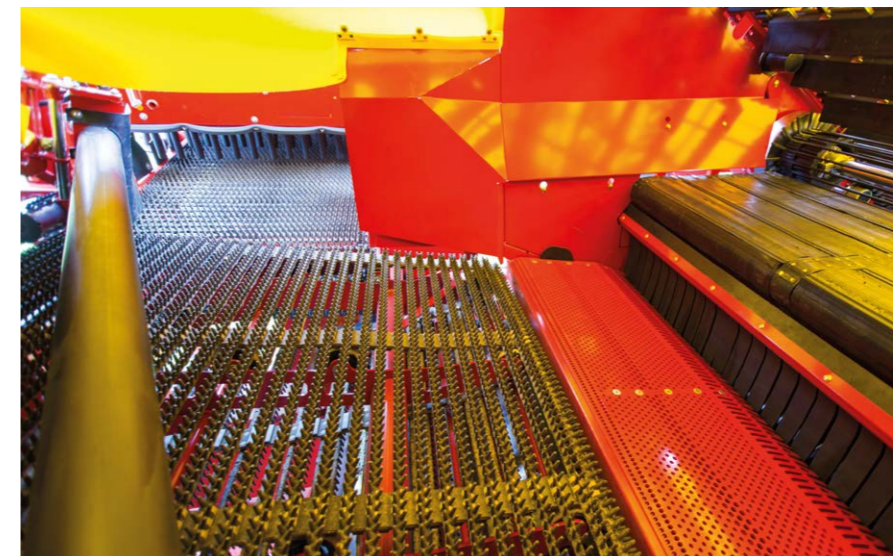


AirSep
Grimme Innovation

The AirSep is a pneumatic trash separator which separates stones and wet clods from the harvested crop. The separator works very gently with an uplift concept. An airstream keeps the crop in a floating position and gently transfers it from the separator.

Crop flow

Due to position of the AirSep the trash gets separated from the crop flow at an early stage. After the second main web, the crop flow is transferred to the easily adjustable AirSep. The generated airstream keeps the crop in the air and the stones and moist are almost completely separated.



The result

is a crop flow without stones and moist. After the AirSep, these are transferred onto the trash web and are then fed into a stone box which can be unloaded at the edge of the field.



Clean harvested crop

For an additional separation of trash, the crop is discharged after the AirSep onto a hedgehog web in combination with a triple scraper roller.



Maximum separating performance

ClodSep separator

The speed of the two finger belts can be separately adjusted by hydraulic means. The ClodSep supports the AirSep to separate left trash.



Handpicked harvesting

Picking platform

The high separation performance of the EVO 290 AirSep reduces the manual picking. Nevertheless, the spacious platform offers space for up to 6 people.



9-ton bunker

Full power

The large bunker volume reduces the time-consuming bunker unloadings and prevents unnecessary tractor passes, e.g. when harvesting on long fields. The automatic bunker filling is standard. A bunker outlet for an improved crop protection during bunker unloading is available on request.



Highest crop protection

Bunker head lowering

The moving floor bunker can be equipped with an adjustable bunker head lowering as an option, for a minimum drop height from the bunker into the trailer during unloading.



NonstopBunker

Quick and gentle

The patented NonstopBunker with 5.5 t bunker volume realizes a fast but very gentle emptying into the trailer. The revolving bunker floor allows a constant full filling of the bunker. An increase of up to 30 % is possible compared to standard bunker.

Proper attachment

The bottom drawbar provides a favourable pulling point below the drive shaft. The traction forces are distributed evenly between the front- and the rear axle of the tractor.



Well protected Hose cabinet

The covered and adjustable hose cabinet protects electrical and hydraulic connections from weather influences.



TriSys-Chassis 3 wheel chassis

Up to 65 % more contact area (footprint) compared to a standard harvester. Steering of all three wheels. Optionally available radial tyres, size up to 1000/50 R25, enable a ground-protective driving on the field.



Highest comfort CCI 50 terminal

The 5.6" ISOBUS terminal (standard) with intuitive GDI user interface and 12 robust membrane keys is best suited for safe operation even on rough terrain.



CCI 1200 terminal

As an option there is an ISOBUS terminal of 12.1" incl. intuitive MultiTouch operation available. 2 large windows and 4 so called Miniviews can be displayed simultaneously and maximized by tapping. The unique help system provides the driver with information about the currently selected application.



Multi-functional lever

For enhanced convenience, a free-programmable, ISOBUS-compatible multi-functional lever can be selected instead of the GBX control box. Five double acting functions as well as the X- and Y-axis are free programmable.

Relief for the driver

Assistance systems

Visual Protect detects automatically errors and shows the concerned area of the machine on the monitor. Also when operating specific functions the respective camera automatically is shown on the monitor.

**Visual
PROTECT**

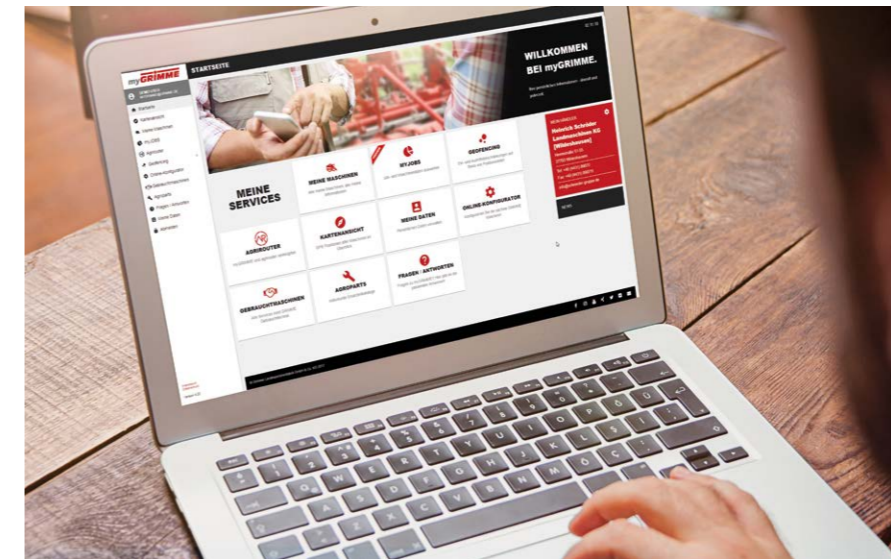


Speedtronic is the load dependant fully automatic speed control for the 1st and 2nd separator as well as for the picking table. The driver is relieved from all manual monitoring and control jobs, blockings are minimized while crop protection is maximized.

Speedtronic



MemoryControl allows the central adjustment of the drives and separators. It is possible to save settings as speed, adjusting angle and limit values for different harvesting conditions and recall these quickly if required. Up to 8 programs can be saved and allow you to set your harvesting performance from gentle to output-oriented.



myGRIMME

The customer portal

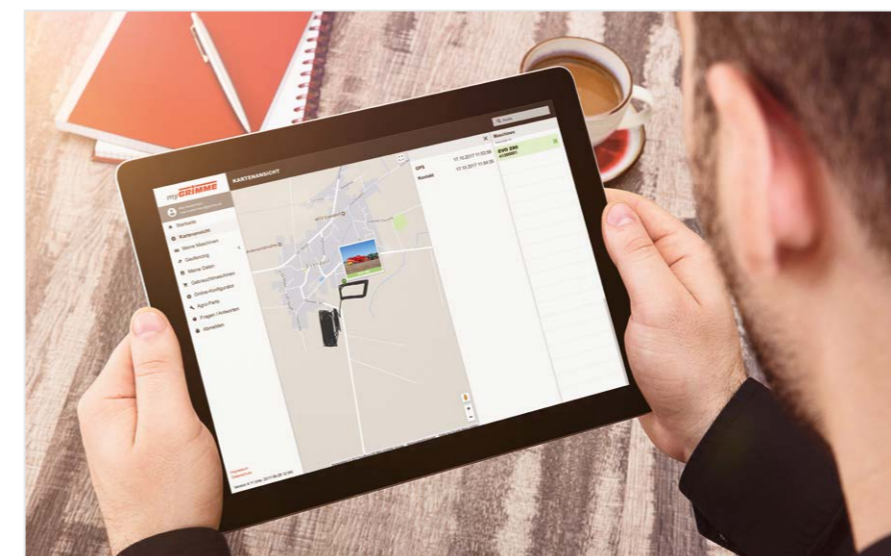
MyGRIMME is an internet portal for final customers where all GRIMME machines can be clearly managed.

The core of the portal is the digital machine file, which displays specific informations. These include the specific equipment features of the machine, and the corresponding operating instructions and spare parts list. As well as this, maintenance instructions and required updates are clearly displayed.

But myGRIMME can do even more. Machines with a telemetry unit are clearly displayed on a Google Maps map. Therefore the owner can not only track the location of the machine, but its exact movements in the field.

Further applications are incorporated in the next stages of development so that the owner continues to reap the benefits of myGRIMME.

As standard, all EVO 290 machines are equipped with a telemetry unit that transmits parameters of the machine and its location on request. The user can retrieve and process the data at myGRIMME via browser.



Technical data

Standard equipment

	EVO 290 AirSep
Length	12000 mm
Width	3300 mm
Height with moving floor bunker / overloading bunker	3990 mm
Empty weight with basic configuration	16000 kg
Permitted Bearing load drawbar	4000 kg
Low hitch	X
Input speed p.t.o.-shaft	540/1000 r.p.m. PTO
1st main web width	1500 mm
2nd main web width	1700 mm
1st main web sieving area	4.8 m ²
2nd main web sieving area	4.2 m ²
Deviner web width	1700 mm
1st separator width	1500 mm
2nd separator width	1300 mm
Picking table width	915 mm
Trash web width	400 mm
Picking personal	3+3
Bunker capacity	9000 kg
Bunker unloading height	4450 mm
Wheels	710/50-30.5
Air brake	X
Transport speed	40 km/h
Power requirement	150 kW
Oil flow	80 l/min
Required control valves (double acting)	1
Non-pressurized return flow	1
ISOBUS	x
ISOBUS InCab-plug	1





No claims can be raised in respect of texts, illustrations, technical specifications, dimensions and weights, equipment as well as performance specifications. They are approximate and non-binding. Changes in the course of technical enhancement are possible at any time.



Download our contact details to your smart phone quickly and easily by means of the QR code!

GRIMME Landmaschinenfabrik GmbH & Co. KG
Hunteburger Straße 32 · 49401 Damme · Germany
Phone +49 5491 666-0 · Fax +49 5491 666-2298
grimme@grimme.de · www.grimme.de

GRIMME